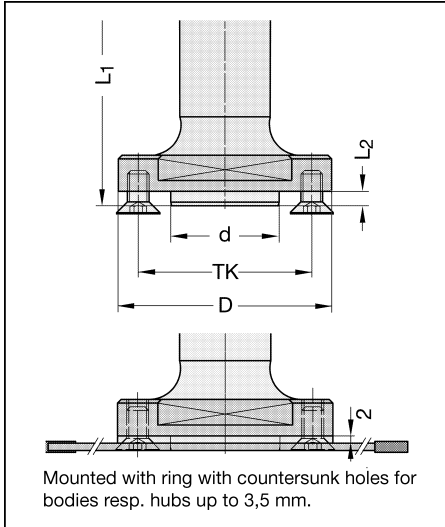


21079



d mm	D mm	L ₂ mm	L ₁ mm	TK mm	Shank mm	Part-No.	Price each
22	50	4	90	36	25 x 65 m. E.	21079-0-22046-2	◆ 121,00
30	60	4	90	48	20 x 65 m. E.	21079-0-30045-2	● 137,00
30	60	4	90	48	25 x 65 m. E.	21079-0-30046-2	● 121,00

Technical details/Application:

For direct mounting of tools with 2 - 10 mm thick bodies respectively hubs (e.g. saw blades, grooving cutters). Having bodies or hubs of a thickness up to 3,5 mm the ring (included when ordering the arbor) has to be mounted between tool and collar. Supplied with 4 countersunk screws.

Design with d = 22 mm applicable for Lamello grooving cutters No. 40145 or No. 60255, page 5.29. Supplied without engineers' wrench. Optional on demand.

Spare parts / Accessories

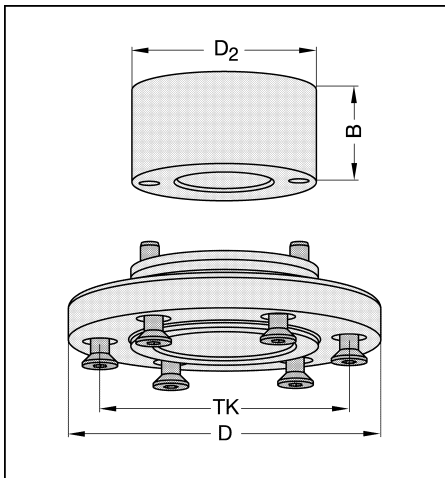
		PU
Countersunk screw	M 6 x 16 DIN 7991	39125-0-06016-R 10
Ring	60 x 2,0 x 30 mm, with countersunk holes	39541-0-02000-3 1
Ring	50 x 2,0 x 22 mm, with countersunk holes	39541-0-02022-3 1
Engineers' wrench	SW 46	39162-0-00046-0 1

Clamping Flanges for Saw Blades

on CNC machines

new

39495



Appropriate saw blades on page 5.31.

Description	D mm	B mm	D ₁ mm	L ₃ mm	D ₂ mm	Part-No.	Price each
Adaptor 2-pc.-design	100	30	30	55	-	39495-0-10000-4	● 204,00
Adaptor 2-pc.-design	100	45	30	70	-	39495-0-10001-4	● 209,00
Adaptor 2-pc.-design	100	70	30	95	-	39495-0-10002-4	● 215,00
Flange (without ring)	100	-	30	-	-	39495-0-10030-4	● 117,00
Intermediate ring	-	30	30	55	60	39541-0-30000-4	● 86,50
Intermediate ring	-	45	30	70	60	39541-0-45000-4	● 92,00
Intermediate ring	-	70	30	95	60	39541-0-70000-4	● 97,50

Technical details:

2-piece saw blade flange, consisting of flange and intermediate ring, tempered and face-ground, with 6 countersunk screws M 6, pitch circle diameter 80 mm.

Applicable for all arbors d 30 x 40/55/80 mm on pages 3.15 - 3.18 with drive holes.

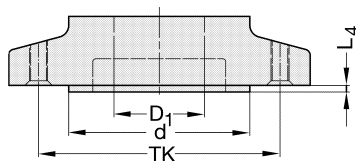
Delivery complete with two straight pins 6 x 10 to provide positive drive.

Application:

For mounting of saw blades up to D= 350 mm with 60 mm bore on standard arbors with shank 25 mm, SK 30, SK 40, HSK 63 F + E, etc. (pages 3.15 - 3.18).

Spare parts / Accessories

		PU
Countersunk screw	M 6 x 12 DIN 7991	39125-0-06012-R 10



L₄ = 2,2 mm
 D₁ = 30 mm
 d = 60 mm
 TK = 80 mm

Without further notice, we deliver L₃ = 55 mm (for A = 100 mm). For different length, please choose appropriate arbor and intermediate ring as per table below.

L ₂	B	L ₃	A
40	30	55	100 (135)
55	45	70	115 (150)
80	70	95	140 (175)

